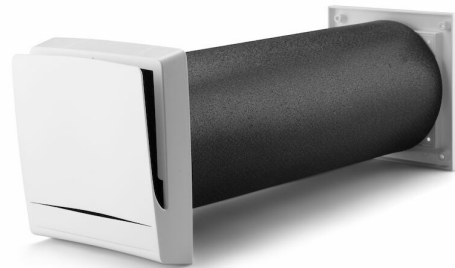


# Fresh

## Wall vent TL80F dBs

Cat. Part Number 638052

- Noise-reducing • Infinitely adjustable •
- Condensation-protecting design • Distribution pattern for underfloor heating • Built-in basic flow • Multiple filter options



**Sound-absorbent wall vent for wall mounting. Designed for continuous ventilation of homes.**

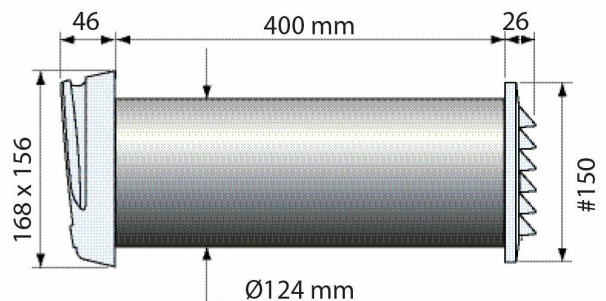
### Functions

Condensation protection, Filter, Noise reduction

### Technical data

Installation type, wall, ceiling etc.	Exterior wall
Duct size nominal Ø (mm)	80
Duct Length	360
Unpackaged Product Width (mm)	156
Unpackaged Product Height (mm)	168
Unpackaged Product Depth (mm)	432
Material	Plastic
Plastic Material detail	ABS, PS
Etim Code	EC011497

### Measure sketch/CAD



## Description

Wall vent with a very comfortable distribution pattern designed for underfloor heating

When delivered as an assembly, the vent comes with a filter, sound-absorbent lead-through and exterior wall grille.

The lead-through consists of a sound-absorbent pipe and an external grille with adapter.

The sound-absorbent pipe can be easily cut to the right length using a standard knife. The standard pipe length is 360 mm.

Internal vent part:

The internal vent part has a condensation-protecting design, filter and a precision shutter for infinitely adjustable setting of flow. The shutter control is hidden under the cover. The distribution pattern has been carefully developed to suit underfloor heating systems.

The vent releases the air upwards and to the sides.

Mixture with room air is very effective. Very cooled air reaches a comfortable temperature just a few decimetres from the device.

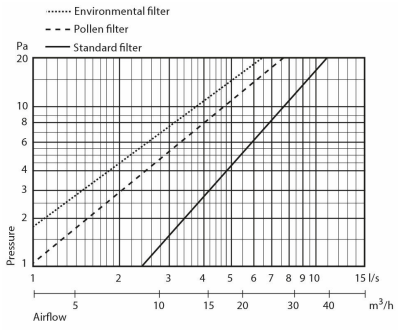
Installation/positioning:

The vent should be positioned high up on the wall. If there is a radiator, it is best to try to position the vent above this. With this positioning, you utilise the convection flow and achieve the best comfort level. The vent works extremely well with underfloor heating and is designed for this.

Operation/maintenance:

To ensure good air quality and maintained flow, the filter should be cleaned/replaced 1–2 times/year. The standard filter can be washed in a mild soap solution. The pollen and environmental filters must be replaced. The filter is fitted behind the cover, which is easily removed by pulling it straight out from the vent chassis.

## Kapacitet



## Accessories



**Filter TL-F/P  
and D-800/D-  
1200 standard  
3-pcs**

Cat 183293



**Filter TL-F/P  
pollen 3-pcs**

Cat 183294



**Chuck D32-210**

Cat 804046



**Chuck  
extender D32-  
210**

Cat 804048



**Hole saw D127**

Cat 804044



**External grille  
#150 black**

Cat 181706



**External grille  
#150 röd**

Cat 181705



**External grille  
#150 grey**

Cat 181707



**Insect net 150  
DIY**

Cat 664004



**Filterholder  
TL-F complete**

Cat 193278

Cat □ 858050